

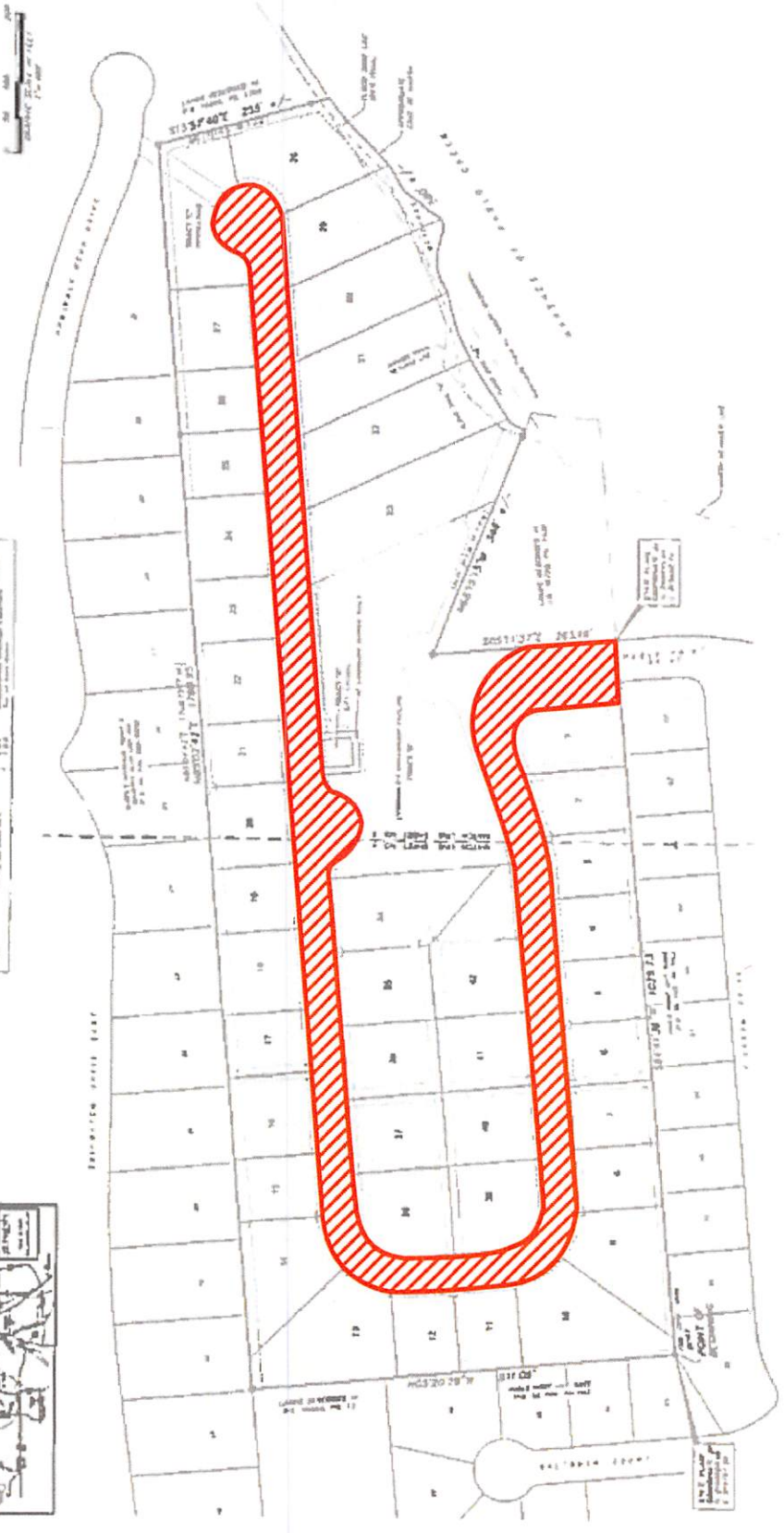
SHEET 2 OF 4 SHEETS  
(SEE SHEET 1 OF 4 FOR NOTES)

### WATERSIDE

A PORTION OF A REVISION OF PLAT BOOK 70, SHEET 1, RECORD 1, DUVAL COUNTY, FLORIDA, AS RECORDED IN PLAT BOOK 70, SHEET 1, RECORD 1, DUVAL COUNTY, FLORIDA.

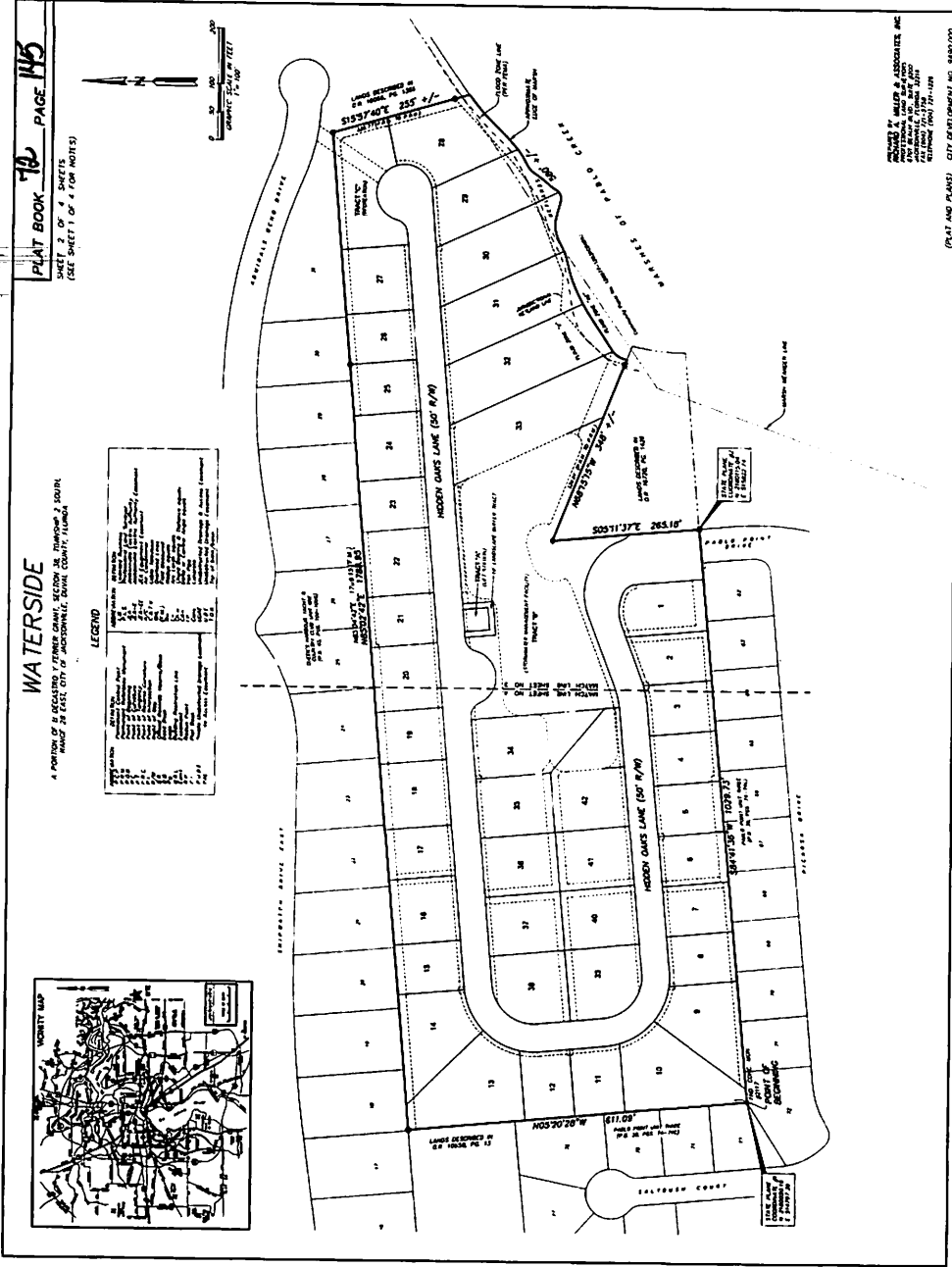
#### LEGEND

1.00	As Shown	As Shown
1.01	As Shown	As Shown
1.02	As Shown	As Shown
1.03	As Shown	As Shown
1.04	As Shown	As Shown
1.05	As Shown	As Shown
1.06	As Shown	As Shown
1.07	As Shown	As Shown
1.08	As Shown	As Shown
1.09	As Shown	As Shown
1.10	As Shown	As Shown
1.11	As Shown	As Shown
1.12	As Shown	As Shown
1.13	As Shown	As Shown
1.14	As Shown	As Shown
1.15	As Shown	As Shown
1.16	As Shown	As Shown
1.17	As Shown	As Shown
1.18	As Shown	As Shown
1.19	As Shown	As Shown
1.20	As Shown	As Shown
1.21	As Shown	As Shown
1.22	As Shown	As Shown
1.23	As Shown	As Shown
1.24	As Shown	As Shown
1.25	As Shown	As Shown
1.26	As Shown	As Shown
1.27	As Shown	As Shown
1.28	As Shown	As Shown
1.29	As Shown	As Shown
1.30	As Shown	As Shown
1.31	As Shown	As Shown
1.32	As Shown	As Shown
1.33	As Shown	As Shown
1.34	As Shown	As Shown
1.35	As Shown	As Shown
1.36	As Shown	As Shown
1.37	As Shown	As Shown
1.38	As Shown	As Shown
1.39	As Shown	As Shown
1.40	As Shown	As Shown
1.41	As Shown	As Shown
1.42	As Shown	As Shown
1.43	As Shown	As Shown
1.44	As Shown	As Shown
1.45	As Shown	As Shown
1.46	As Shown	As Shown
1.47	As Shown	As Shown
1.48	As Shown	As Shown
1.49	As Shown	As Shown
1.50	As Shown	As Shown
1.51	As Shown	As Shown
1.52	As Shown	As Shown
1.53	As Shown	As Shown
1.54	As Shown	As Shown
1.55	As Shown	As Shown
1.56	As Shown	As Shown
1.57	As Shown	As Shown
1.58	As Shown	As Shown
1.59	As Shown	As Shown
1.60	As Shown	As Shown
1.61	As Shown	As Shown
1.62	As Shown	As Shown
1.63	As Shown	As Shown
1.64	As Shown	As Shown
1.65	As Shown	As Shown
1.66	As Shown	As Shown
1.67	As Shown	As Shown
1.68	As Shown	As Shown
1.69	As Shown	As Shown
1.70	As Shown	As Shown
1.71	As Shown	As Shown
1.72	As Shown	As Shown
1.73	As Shown	As Shown
1.74	As Shown	As Shown
1.75	As Shown	As Shown
1.76	As Shown	As Shown
1.77	As Shown	As Shown
1.78	As Shown	As Shown
1.79	As Shown	As Shown
1.80	As Shown	As Shown
1.81	As Shown	As Shown
1.82	As Shown	As Shown
1.83	As Shown	As Shown
1.84	As Shown	As Shown
1.85	As Shown	As Shown
1.86	As Shown	As Shown
1.87	As Shown	As Shown
1.88	As Shown	As Shown
1.89	As Shown	As Shown
1.90	As Shown	As Shown
1.91	As Shown	As Shown
1.92	As Shown	As Shown
1.93	As Shown	As Shown
1.94	As Shown	As Shown
1.95	As Shown	As Shown
1.96	As Shown	As Shown
1.97	As Shown	As Shown
1.98	As Shown	As Shown
1.99	As Shown	As Shown
2.00	As Shown	As Shown



DESIGNED BY: HALL'S & ASSOCIATES, INC.  
 1000 N. W. 10th St., Suite 100  
 Ft. Lauderdale, Florida 33304  
 Telephone: (305) 551-1111  
 Fax: (305) 551-1112

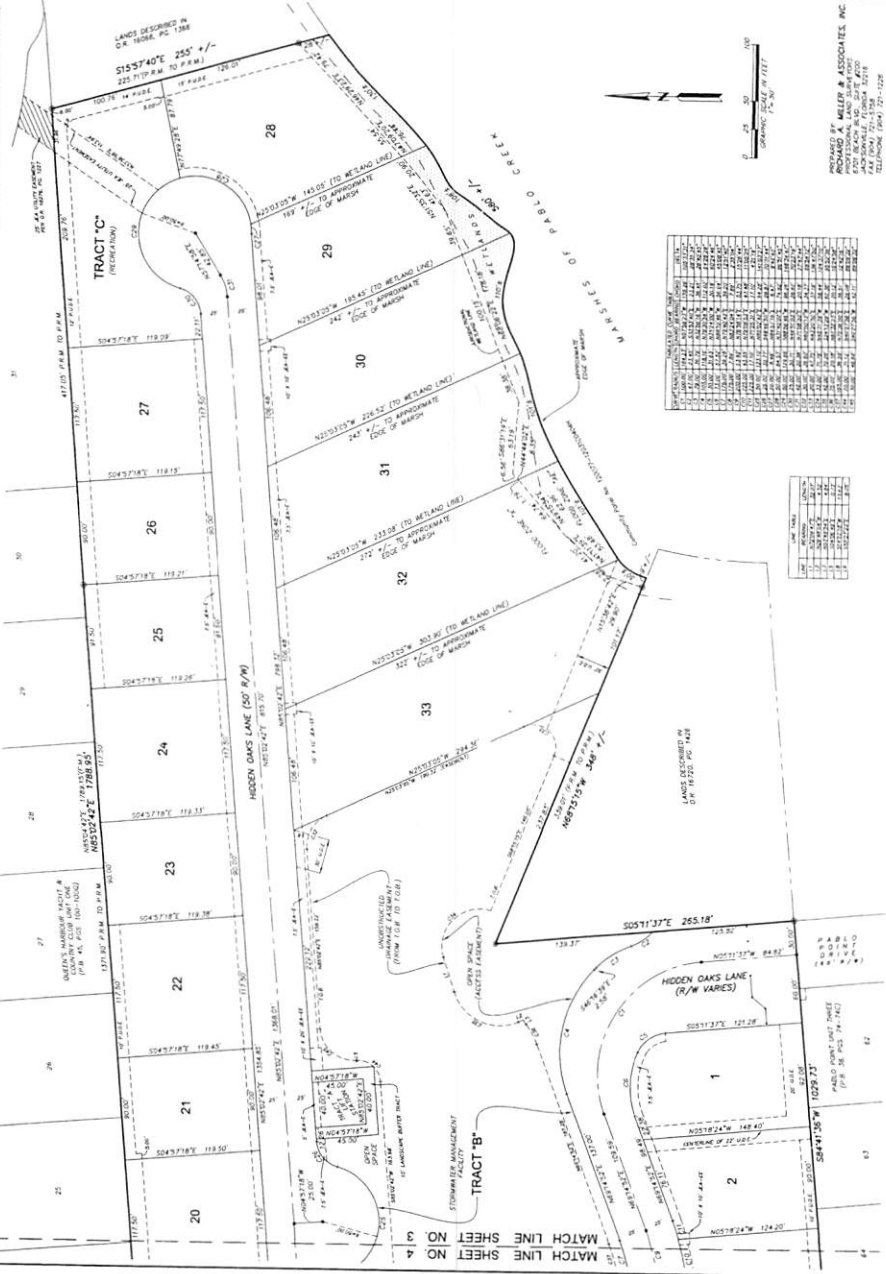
ALL OF HIDDEN OAKS LANE RIGHT-OF-WAY AS SHOWN ON THE  
 PLAT OF WATERSIDE AS RECORDED IN PLAT BOOK 72, PAGE 144,  
 OF THE CURRENT PUBLIC RECORDS IN DUVAL COUNTY, FLORIDA



**WATERSIDE**

PORTION OF B. RICARDO Y. FERNER GRANT, SECTION 36, TOWNSHIP 2 SOUTH,  
RANGE 28 EAST, CITY OF JACKSONVILLE, DADE COUNTY, FLORIDA

**PLAT BOOK 102 PAGE 140**  
SHEET 3 OF 4 SHEETS  
(SEE SHEET 1 OF 4 FOR NOTES AND 2 OF 4 LEGEND)



PREPARED BY: MILLER & ASSOCIATES, INC.  
5200 W. BAY BLVD., SUITE 400  
MIAMI, FLORIDA 33149  
TELEPHONE: (305) 574-1000

Table with 3 columns: LOT NO., AREA (SQ. FT.), AREA (ACRES). Lists lots 20 through 33 with their respective areas.

Table with 2 columns: LOT NO., AREA (SQ. FT.). Lists lots 1 through 3 with their respective areas.

(PLAT AND PLANS) CITY DEVELOPMENT NO. 348500

